



US009419061B2

(12) **United States Patent**
Lee et al.

(10) **Patent No.:** **US 9,419,061 B2**
(45) **Date of Patent:** **Aug. 16, 2016**

(54) **ORGANIC LIGHT-EMITTING DISPLAY APPARATUS AND METHOD OF MANUFACTURING THE SAME**

(71) Applicant: **Samsung Display Co., Ltd.**, Yongin, Gyeonggi-do (KR)

(72) Inventors: **Hjeong Lee**, Yongin (KR); **Sewan Son**, Yongin (KR); **Youngwoo Park**, Yongin (KR); **Wangwoo Lee**, Yongin (KR)

(73) Assignee: **Samsung Display Co., Ltd.**, Gyeonggi-do (KR)

(*) Notice: Subject to any disclaimer, the term of this patent is extended or adjusted under 35 U.S.C. 154(b) by 50 days.

(21) Appl. No.: **14/700,454**

(22) Filed: **Apr. 30, 2015**

(65) **Prior Publication Data**

US 2016/0118447 A1 Apr. 28, 2016

(30) **Foreign Application Priority Data**

Oct. 24, 2014 (KR) 10-2014-0145390

(51) **Int. Cl.**

H01L 27/14 (2006.01)
H01L 29/04 (2006.01)
H01L 29/15 (2006.01)
H01L 31/036 (2006.01)
H01L 27/32 (2006.01)
H01L 27/12 (2006.01)

(52) **U.S. Cl.**

CPC **H01L 27/3244** (2013.01); **H01L 27/124** (2013.01); **H01L 27/1259** (2013.01)

(58) **Field of Classification Search**

CPC H01L 27/3244; H01L 27/1259; H01L 27/124

See application file for complete search history.

(56) **References Cited**

U.S. PATENT DOCUMENTS

2004/0012058 A1 1/2004 Aoki
2005/0127376 A1* 6/2005 Young H01L 27/3225
257/80

2005/0255616 A1* 11/2005 Childs H01L 27/3276
438/22
2007/0215876 A1* 9/2007 Lee H01L 27/124
257/59
2008/0012484 A1* 1/2008 Park H01L 51/5088
313/509
2009/0141060 A1* 6/2009 Kwon B41J 3/28
347/14
2009/0184324 A1* 7/2009 Oh H01L 27/3276
257/72
2009/0231310 A1* 9/2009 Tsai H01L 27/124
345/205
2010/0044717 A1* 2/2010 Choi H01L 29/458
257/72
2013/0161609 A1* 6/2013 Koyama H01L 29/66969
257/43
2014/0054562 A1 2/2014 Lee
2014/0084293 A1 3/2014 Ahn et al.
2014/0111404 A1* 4/2014 Omata G09G 3/32
345/76
2014/0167050 A1* 6/2014 Jin H01L 29/66757
257/59
2014/0299881 A1* 10/2014 Oda H01L 27/124
257/59
2015/0144923 A1* 5/2015 Choo H01L 27/3265
257/40

FOREIGN PATENT DOCUMENTS

JP 2003-215635 7/2003
JP 3901127 1/2007
JP 2007-149971 6/2007
JP 2014-107245 6/2014
KR 10-2014-0026196 3/2014

* cited by examiner

Primary Examiner — Thanh Y Tran

(74) *Attorney, Agent, or Firm* — Knobbe Martens Olson & Bear LLP

(57) **ABSTRACT**

An organic light-emitting display apparatus includes a gate electrode of a thin-film transistor (TFT) and a gate wiring electrically connected to the gate electrode and formed on different layers with an insulating layer disposed between the gate electrode and the gate wiring.

7 Claims, 3 Drawing Sheets

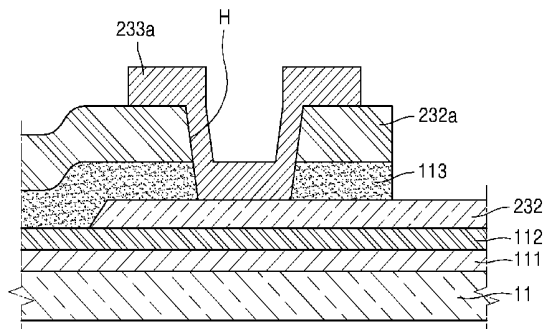
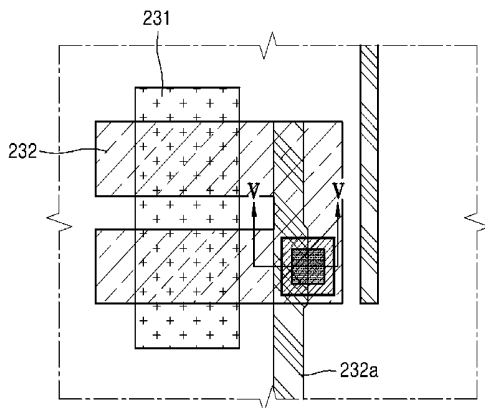


FIG. 1

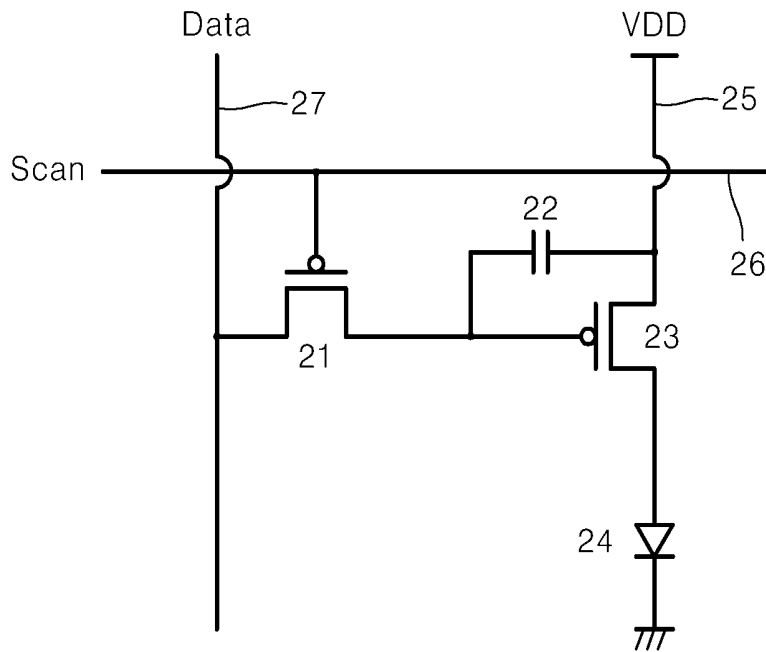


FIG. 2

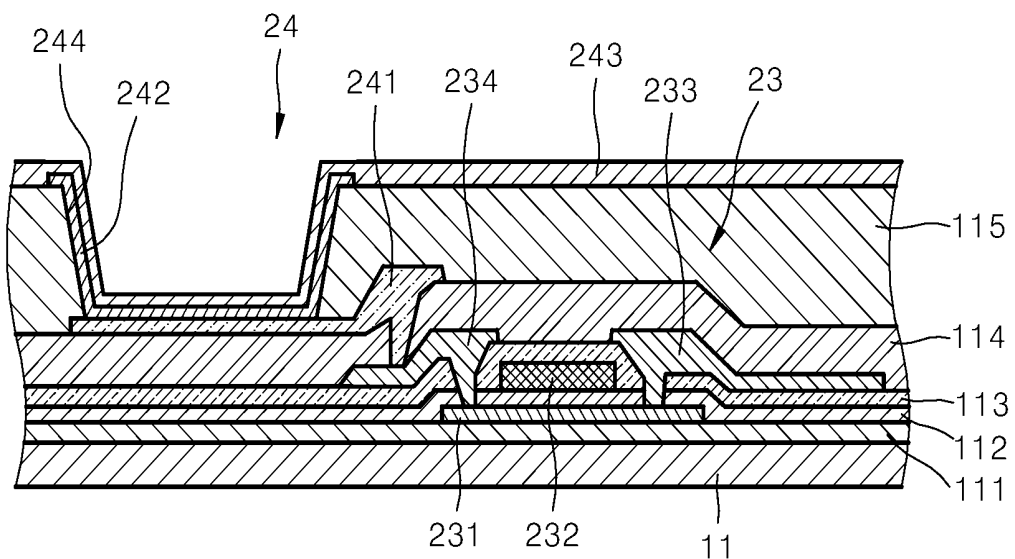


FIG. 3

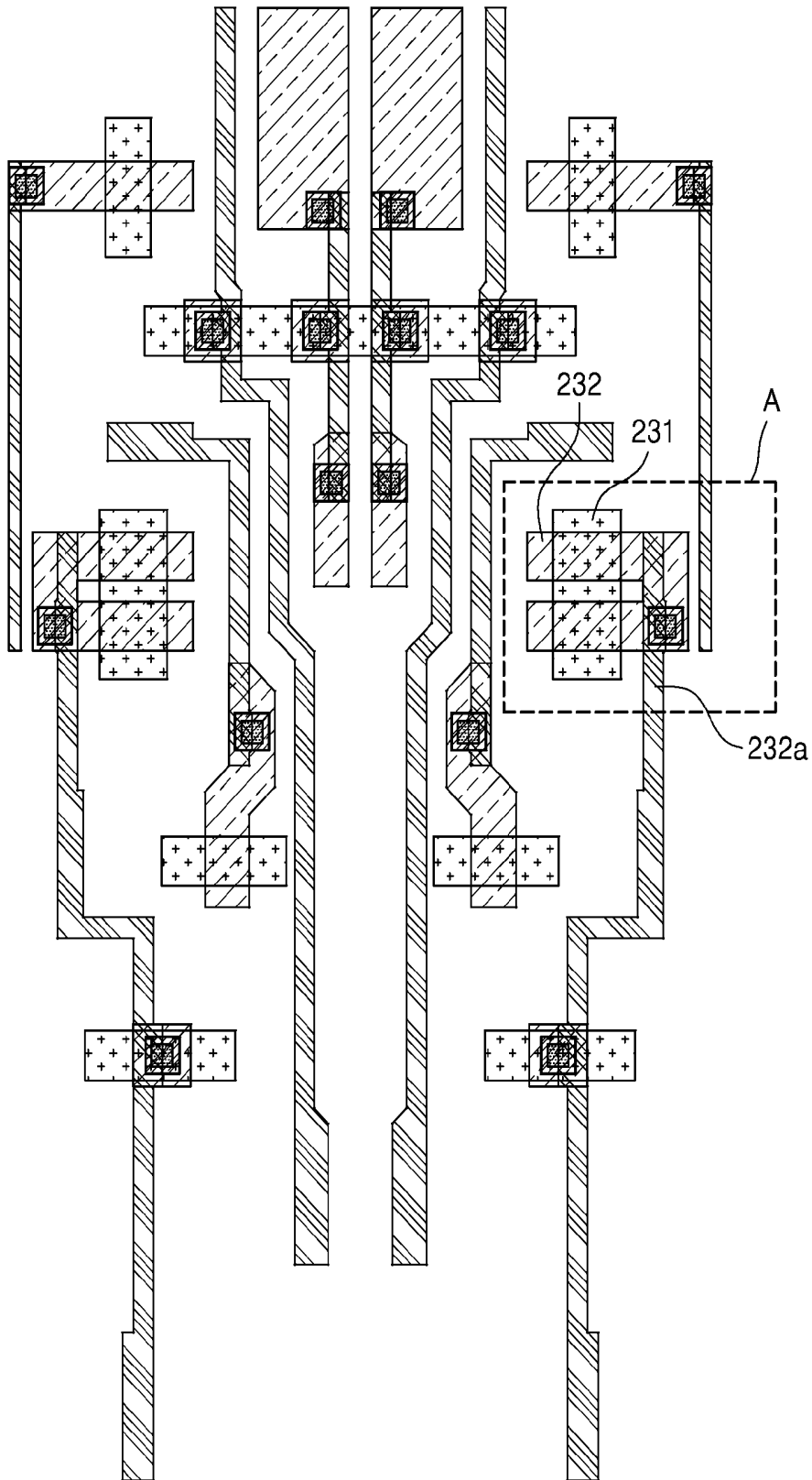


FIG. 4

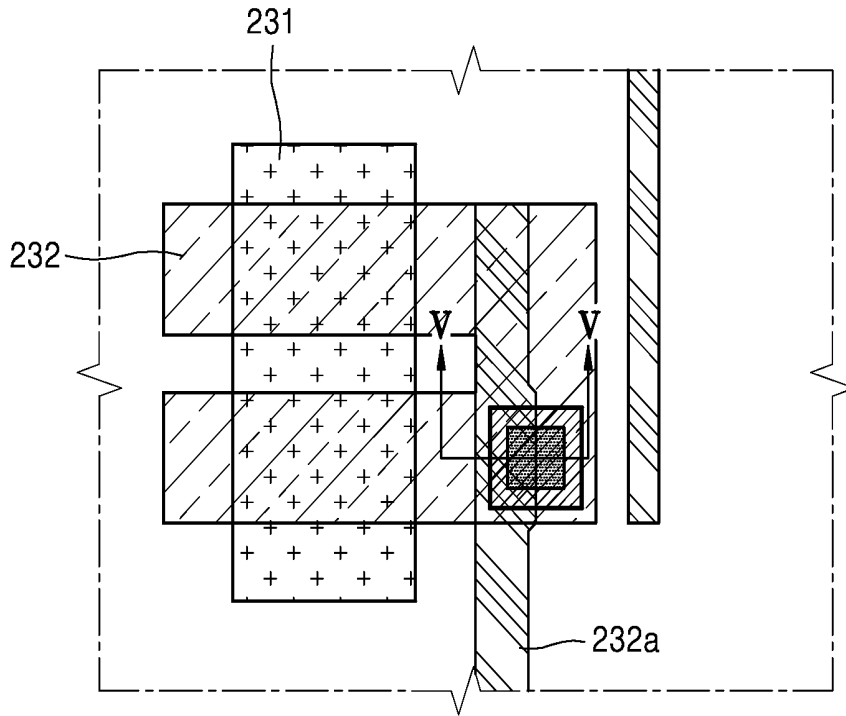
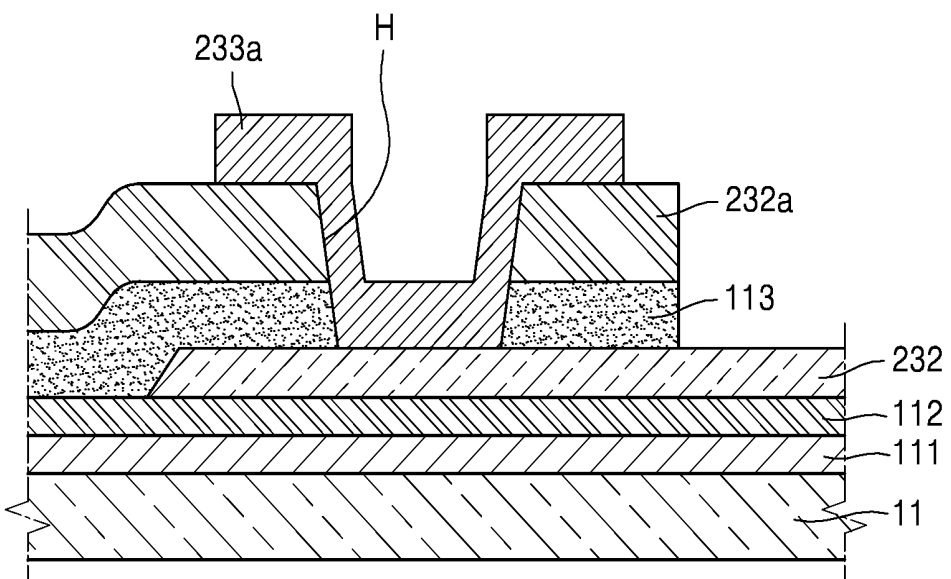


FIG. 5



ORGANIC LIGHT-EMITTING DISPLAY APPARATUS AND METHOD OF MANUFACTURING THE SAME

CROSS-REFERENCE TO RELATED APPLICATIONS

This application claims the benefit of, and priority to, Korean Patent Application No. 10-2014-0145390, filed on Oct. 24, 2014, in the Korean Intellectual Property Office, the disclosure of which is incorporated herein in its entirety by reference.

BACKGROUND

1. Field

One or more embodiments relate to an organic light-emitting display apparatus and a method of manufacturing the same.

2. Description of the Related Technology

In general, an organic light-emitting display apparatus includes a thin-film transistor (TFT) and an organic light-emitting device. The organic light-emitting display apparatus forms a desired image by emitting light upon receiving an appropriate driving signal from the TFT.

The TFT typically has a structure in which an active layer, a gate electrode, a source electrode, and a drain electrode are stacked on a substrate. Accordingly, when a current is supplied to the gate electrode through a wiring that is formed on the substrate, the current flows through the active layer to the source electrode and the drain electrode and also flows to a pixel electrode of the organic light-emitting device that is connected to the drain electrode.

The organic light-emitting device includes the pixel electrode, a counter electrode that faces the pixel electrode, and an emission layer that is disposed between the pixel electrode and the counter electrode. When the current flows to the pixel electrode through the TFT as described above, an appropriate voltage is generated between the counter electrode and the pixel electrode, and thus the emission layer emits light, thereby an image being formed on the organic light-emitting device.

SUMMARY OF CERTAIN INVENTIVE ASPECTS

One or more embodiments include an organic light-emitting display apparatus and a method of manufacturing the same.

Additional aspects will be set forth in part in the description which follows and, in part, will be apparent from the description, or may be learned by practice of the presented embodiments.

According to one or more embodiments, an organic light-emitting display apparatus includes: a substrate; a thin-film transistor (TFT) formed on the substrate and including an active layer, a gate electrode, a source electrode, and a drain electrode; and a gate wiring electrically connected to the gate electrode, wherein the gate electrode and the gate wiring are formed on different layers with an insulating layer disposed therebetween.

The gate electrode may be formed on a first surface of the insulating layer close to the substrate and the gate wiring is formed on a second surface of the insulating layer opposite the first surface of the insulating layer.

A contact hole that passes through the gate wiring and the insulating layer may be formed in a region where the gate electrode and the gate wiring overlap each other.

A conductive layer may be filled in the contact hole to electrically connect the gate electrode and the gate wiring.

The conductive layer may be formed of a same material and on a same layer as the source electrode and the drain electrode.

An area of the gate electrode may be greater than an area of the gate wiring in the region where the gate wiring and the gate electrode overlap each other.

According to one or more embodiments, a method of manufacturing an organic light-emitting display apparatus includes: forming on a substrate a thin-film transistor (TFT) that includes an active layer, a gate electrode, a source electrode, and a drain electrode; forming a gate wiring so that the gate wiring and the gate electrode are formed on different layers with an insulating layer disposed therebetween; and electrically connecting the gate electrode and the gate wiring.

The insulating layer may be formed on the gate electrode and the gate wiring may be formed on the insulating layer.

Electrically connecting the gate electrode and the gate wiring may include: forming a contact hole that passes through the gate wiring and the insulating layer in a region where the gate electrode and the gate wiring overlap each other; and filling a conductive layer in the contact hole.

The conductive layer may be formed of a same material and on a same layer as the source electrode and the drain electrode.

An area of the gate electrode may be greater than an area of the gate wiring in the region where the gate wiring and the gate electrode overlap each other.

BRIEF DESCRIPTION OF THE DRAWINGS

These and/or other aspects will become apparent and more readily appreciated from the following description of the embodiments, taken in conjunction with the accompanying drawings in which:

FIG. 1 is an equivalent circuit diagram illustrating one pixel included in an organic light-emitting display apparatus, according to an embodiment;

FIG. 2 is a cross-sectional view illustrating a thin-film transistor (TFT) and an organic light-emitting device of FIG. 1, according to an embodiment;

FIG. 3 is a plan view illustrating only an active layer, a gate electrode, and a gate wiring of the TFT of FIG. 1, according to an embodiment;

FIG. 4 is an enlarged plan view illustrating a portion A of FIG. 3, according to an embodiment; and

FIG. 5 is a cross-sectional view taken along line V-V of FIG. 4, according to an embodiment.

DETAILED DESCRIPTION OF CERTAIN INVENTIVE EMBODIMENTS

The inventive concepts may include various embodiments and modifications, and certain embodiments thereof will be illustrated in the drawings and will be described herein. The effects and features of the inventive concepts and the accompanying methods thereof will become apparent from the following description of the embodiments, taken in conjunction with the accompanying drawings. However, the inventive concepts are not limited to the embodiments described below, and may be embodied in various modes.

The inventive concepts will now be described more fully with reference to the accompanying drawings, in which certain embodiments are shown. In the drawings, the same or

corresponding elements are generally denoted by the same reference numerals, and thus a repeated explanation thereof will not be given.

As used herein, the singular forms “a,” “an” and “the” are intended to include the plural forms as well, unless the context clearly indicates otherwise.

It will be further understood that the terms “comprises” and/or “comprising” used herein specify the presence of stated features or components, but do not preclude the presence or addition of one or more other features or components.

It will be understood that when a layer, region, or component is referred to as being “formed on” another layer, region, or component, it can be directly or indirectly formed on the other layer, region, or component. That is, for example, intervening layers, regions, or components may also be present.

Sizes of components in the drawings may be exaggerated for convenience of explanation. In other words, since sizes and thicknesses of components in the drawings are arbitrarily illustrated for convenience of explanation, the following embodiments are not limited thereto.

When a certain embodiment may be implemented differently, a specific process order may be different from the described order. For example, two consecutively described processes may be performed substantially at the same time or performed in an order opposite to the described order.

As used herein, the term “and/or” includes any and all combinations of one or more of the associated listed items. Expressions such as “at least one of,” when preceding a list of elements, modify the entire list of elements and do not modify the individual elements of the list.

FIG. 1 is an equivalent circuit diagram illustrating one pixel included in an organic light-emitting display apparatus, according to an embodiment. FIG. 2 is a cross-sectional view illustrating a driving thin-film transistor (TFT) 23 and an organic light-emitting device 24 of FIG. 1, according to an embodiment.

Referring to FIG. 1, each pixel includes a switching TFT 21, a driving TFT 23, a capacitor 22, and an organic light-emitting device 24. It will be understood that the number of TFTs and capacitors is not limited thereto and more TFTs and capacitors may be provided in other embodiments.

The switching TFT 21 is driven by a scan signal that is applied to a gate line 26 and functions to transmit to the driving TFT 23 a data signal that is applied to a data line 27.

The driving TFT 23 determines the amount of current introduced to the organic light-emitting device 24 according to the data signal that is transmitted by the switching TFT 21.

The capacitor 22 functions to store the data signal that is transmitted by the switching TFT 21 for one frame.

From among the elements, cross-sectional views of the organic light-emitting device 24 and the driving TFT 23 are shown in FIG. 2.

The driving TFT 23 includes an active layer 231 that includes an amorphous silicon thin film or a polycrystalline silicon thin film on a buffer layer 111 that is formed on a substrate 11. The active layer 231 has source and drain regions that are heavily doped with N or P-type impurities. For reference, the active layer 231 may include an oxide semiconductor. For example, the oxide semiconductor may include an oxide from group 12, 13, and 14 metal elements such as, for example, zinc (Zn), indium (In), gallium (Ga), tin (Sn), cadmium (Cd), germanium (Ge), and hafnium (Hf) or a combination thereof. For example, the active layer 231 may include $G-I-Z-O[(In_2O_3)_a(Ga_2O_3)_b(ZnO)_c]$ (a, b, and c are real numbers satisfying $a \geq 0$, $b \geq 0$, and $c > 0$).

A gate electrode 232 is formed on the active layer 231 with a first insulating layer 112 therebetween. A source electrode

233, which is connected to a driving power line 25 and applies a reference voltage to the active layer 231 for driving it, and a drain electrode 234, which connects the driving TFT 23 and the organic light-emitting device 24 and supplies driving power to the organic light-emitting device 24, are formed on the gate electrode 232. A second insulating layer 113 is disposed between the gate electrode 232 and the source and drain electrodes 233 and 234, and a passivation film 114 is disposed between the source and drain electrodes 233 and 234 and a first electrode 241 that is an anode of the organic light-emitting device 24.

An insulating planarization film 115 that includes acryl or the like is formed on the first electrode 241. A predetermined opening 244 is formed in the planarization film 115 and then the organic light-emitting device 24 is formed.

The organic light-emitting device 24 that displays predetermined image information by emitting red, green, and blue light according to the flow of current includes the first electrode 241 that is connected to the drain electrode 234 of the driving TFT 23 and acts as an anode for receiving positive power, a second electrode 243 that covers all pixels and acts as a cathode for supplying negative power, and an emission layer 242 that is disposed between the first and second electrodes 241 and 243 and emits light.

The first electrode 241 that acts as an anode may be formed as a transparent electrode including indium tin oxide (ITO) or the like, and the second electrode 243 that acts as a cathode is formed by entirely depositing aluminum (Al)/calcium (Ca) or the like through blanket deposition when the organic light-emitting display apparatus is a bottom-emission organic light-emitting display apparatus in which light is emitted toward the substrate 11. When the organic light-emitting display apparatus is a top-emission organic light-emitting display apparatus in which light is emitted toward an encapsulation member (not shown) that is opposite to the substrate 11, the second electrode 243 may include a transparent material by forming a transfective thin film formed of a metal such as, for example, magnesium (Mg)-silver (Ag) and then depositing transparent ITO on the transfective thin film. It will be understood that the second electrode 243 is not necessarily deposited and may be formed to have any of various patterns. Also, it will be understood that although the second electrode 243 is stacked over the first electrode 241 in FIG. 2, the first electrode 241 may be stacked over the second electrode 243 in other embodiments.

The emission layer 242 may be a low molecular or high molecular weight organic film. A hole injection layer (HIL), a hole transport layer (HTL), an electron transport layer (ETL), and an electron injection layer (EIL) may be further stacked adjacent to the emission layer 242.

For reference, the emission layer 242 may be formed in each pixel so that pixels that emit red, green, and blue light gather to form one unit pixel, or may be commonly formed over all pixels irrespective of positions of the pixels. In this case, the emission layer 242 may be formed by vertically stacking or mixing layers including light-emitting materials that emit red, green, and blue light. If white light may be emitted, another color combination may be used. Also, a color filter or a color conversion layer for converting the emitted white light into light of a predetermined color may be further provided.

The organic light-emitting display apparatus includes a plurality of TFTs such as the driving TFT 23 and the switching TFT 21 in each pixel, and in each of the plurality of TFTs, the active layer 231, the gate electrode 232, the source electrode 233, and the drain electrode 234 are stacked as described above.

A gate wiring **232a** (see FIG. 3) is connected to the gate electrode **232**. One embodiment includes a connection structure between the gate electrode **232** and the gate wiring **232a**. The connection structure between the gate electrode **232** and the gate wiring **232a** is explained below.

FIG. 3 is a plan view illustrating only the active layer **231**, the gate electrode **232**, and the gate wiring **232a** of each of the plurality of TFTs that are included in the organic light-emitting display apparatus of FIG. 1, according to an embodiment. Although the source electrode **233**, the drain electrode **234**, and the like are included, only related layers are illustrated in FIG. 3 in order to effectively show the connection structure between the gate electrode **232** and the gate wiring **232a**. The active layer **231** and the gate electrode **232** are disposed on each of areas where the plurality of TFTs are located and the gate wiring **232a** is connected to the gate electrode **232**.

When the portion A illustrated in FIG. 3 is enlarged, the gate electrode **232** and the gate wiring **232a** are connected to each other as shown in FIGS. 4 and 5. It will be understood that the gate electrode **232** and the gate wiring **232a** are connected to each other in the same manner in other TFTs.

Referring to FIG. 5, the gate electrode **232** and the gate wiring **232a** are vertically separated from each other to be disposed on different layers with the second insulating layer **113** therebetween. That is, the gate electrode **232** is formed on the first insulating layer **112** on the active layer **231** and the gate wiring **232a** is formed on the second insulating layer **113** that is formed on the gate electrode **232**.

Once the gate electrode **232** and the gate wiring **232a** are formed on different layers, the gate electrode **232** and the gate wiring **232a** may be easily patterned according to their characteristics. That is, it is required that the gate wiring **232a** should be formed to have a small width in order to ensure a high resolution and the gate electrode **232** should be formed to have a large width in order to improve characteristics of the TFTs. Accordingly, if the gate electrode **232** and the gate wiring **232a** are formed on the same layer, the requirements for desired patterning conflict and thus it is very difficult to satisfy the requirements for desired patterning. However, if the gate electrode **232** and the gate wiring **232a** are disposed on different layers, the requirements for desired patterning may be easily satisfied and thus product quality may be improved.

Referring to FIG. 4, in a region where the gate electrode **232** and the gate wiring **232a** overlap each other, an area of the gate electrode **232** is much greater than an area of the gate wiring **232a**. That is, if the gate electrode **232** and the gate wiring **232a** are connected to each other on the same layer, since a width of a connected portion has to be small like that of the gate wiring **232a** or has to be large like that of the gate electrode **232**, one from among the advantage of a high resolution and the advantage of improved characteristics of the TFTs has to be given up. However, since the gate electrode **232** and the gate wiring **232a** are formed on different layers, and thus the gate electrode **232** may be formed to have a large width and the gate wiring **232a** may be formed to have a small width according to their characteristics, the organic light-emitting display apparatus having the two advantages may be realized.

The gate electrode **232** and the gate wiring **232a** that are formed on different layers have to be electrically connected to each other. To this end, when seen from the upper side (of the second insulating layer **113**) of FIG. 5, a contact hole H that passes from the gate wiring **232a**, which is opposite to the substrate **11**, to the second insulating layer **113** is formed to expose the gate electrode **232**. Next, a conductive layer **233a** is filled in the contact hole H to electrically connect the gate

electrode **232** and the gate wiring **232a**. That is, the contact hole H is formed in one of regions where the gate electrode **232** and the gate wiring **232a** vertically overlap each other and the conductive layer **233a** is filled in the contact hole H to electrically connect the gate electrode **232** and the gate wiring **232a**. The conductive layer **233a** may be formed as a separate layer, and may be formed of the same material and on the same layer as the source electrode **233** and the drain electrode **234**.

A process of manufacturing the connection structure between the gate electrode **232** and the gate wiring **232a** is explained below.

The buffer layer **111**, the active layer **231**, and the first insulating layer **112** are sequentially formed on the substrate **11**, and then the gate electrode **232** is formed thereon according to appropriate patterning conditions.

The second insulating layer **113** is formed on the gate electrode **232**, and the gate wiring **232a** is formed on the second insulating layer **113** according to patterning conditions suitable for the gate wiring **232a**.

Next, the contact hole H that passes through the gate wiring **232a** and the second insulating layer **113** is formed, the conductive layer **233a** is filled in the contact hole H, and the gate electrode **232** and the gate wiring **232a** are electrically connected to each other. In this case, the conductive layer **233a** may be formed as a separate layer or may be formed of the same material on the same layer as the source electrode **233** and the drain electrode **234** as described above.

As described above, by using the organic light-emitting display apparatus and the method of manufacturing the same according to the one or more of the embodiments, a structure including a gate electrode having a large width to improve characteristics of TFTs and including a gate wiring having a small width to ensure a high resolution may be easily realized.

While one or more embodiments have been described with reference to the figures, it will be understood by those of ordinary skill in the art that various changes in form and details may be made therein without departing from the spirit and scope as defined by the following claims. Accordingly, the true technical scope of the inventive concept is defined by the technical spirit of the appended claims.

What is claimed is:

1. An organic light-emitting display apparatus comprising:
 - a substrate;
 - a thin-film transistor (TFT) formed on the substrate and comprising an active layer, a gate electrode, a source electrode, and a drain electrode;
 - a gate wiring electrically connected to the gate electrode; and
 - an insulating layer,
 wherein the gate electrode is formed on a first surface of the insulating layer close to the substrate and the gate wiring is formed on a second surface of the insulating layer opposite the first surface of the insulating layer, and wherein a contact hole that passes through the gate wiring and the insulating layer is formed in a region where the gate electrode and the gate wiring overlap each other.
2. The organic light-emitting display apparatus of claim 1, wherein a conductive layer is filled in the contact hole to electrically connect the gate electrode and the gate wiring.
3. The organic light-emitting display apparatus of claim 2, wherein the conductive layer is formed of a same material and on a same layer as the source electrode and the drain electrode.
4. The organic light-emitting display apparatus of claim 1, wherein an area of the gate electrode is greater than an area of

the gate wiring in the region where the gate wiring and the gate electrode overlap each other.

5. A method of manufacturing an organic light-emitting display apparatus, the method comprising:

forming on a substrate a thin-film transistor (TFT) that 5
comprises an active layer, a gate electrode, a source electrode, and a drain electrode;

forming a gate wiring so that the gate wiring and the gate electrode are formed on different layers with an insulating layer disposed therebetween, wherein the insulating 10
layer is formed on the gate electrode and the gate wiring is formed on the insulating layer;

forming a contact hole that passes through the gate wiring and the insulating layer in a region where the gate electrode and the gate wiring overlap each other and filling a 15
conductive layer in the contact hole to electrically connect the gate electrode and the gate wiring.

6. The method of claim **5**, wherein the conductive layer is formed of a same material and on a same layer as the source electrode and the drain electrode. 20

7. The method of claim **5**, wherein an area of the gate electrode is greater than an area of the gate wiring in the region where the gate wiring and the gate electrode overlap each other.

* * * * *

专利名称(译)	有机发光显示装置及其制造方法		
公开(公告)号	US9419061	公开(公告)日	2016-08-16
申请号	US14/700454	申请日	2015-04-30
[标]申请(专利权)人(译)	三星显示有限公司		
申请(专利权)人(译)	三星DISPLAY CO. , LTD.		
当前申请(专利权)人(译)	三星DISPLAY CO. , LTD.		
[标]发明人	LEE ILJEONG SON SEWAN PARK YOUNGWOO LEE WANGWOO		
发明人	LEE, ILJEONG SON, SEWAN PARK, YOUNGWOO LEE, WANGWOO		
IPC分类号	H01L27/14 H01L29/04 H01L29/15 H01L27/12 H01L27/32 H01L31/036		
CPC分类号	H01L27/3244 H01L27/124 H01L27/1259 H01L27/3262 H01L27/3276		
优先权	1020140145390 2014-10-24 KR		
其他公开文献	US20160118447A1		
外部链接	Espacenet USPTO		

摘要(译)

一种有机发光显示装置，包括薄膜晶体管（TFT）的栅电极和电连接到栅电极并形成在不同层上的栅极布线，其中绝缘层设置在栅电极和栅极布线之间。

